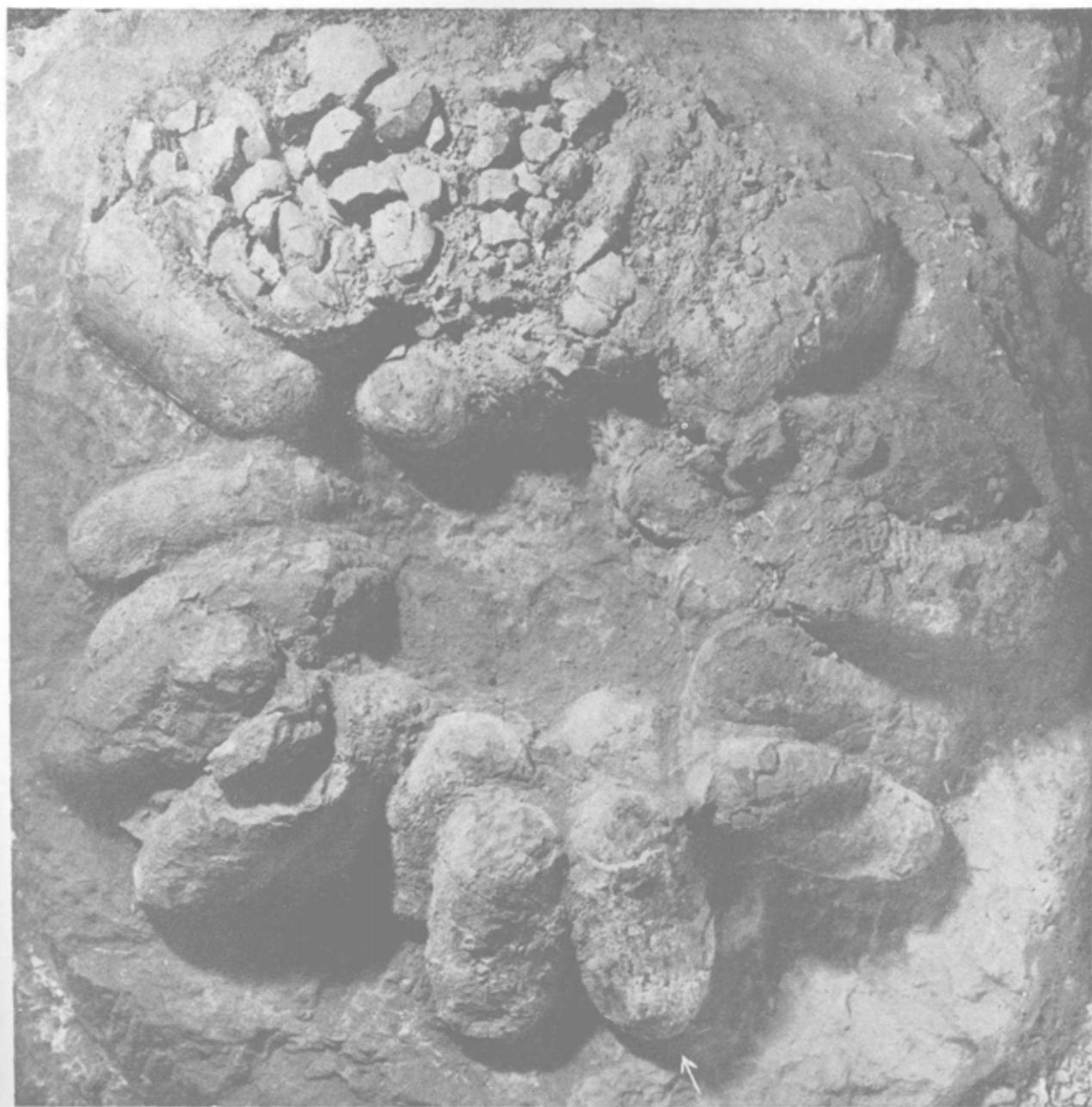




前图中有箭头之蛋的原大。

The egg marked with arrow showing in nat. size.

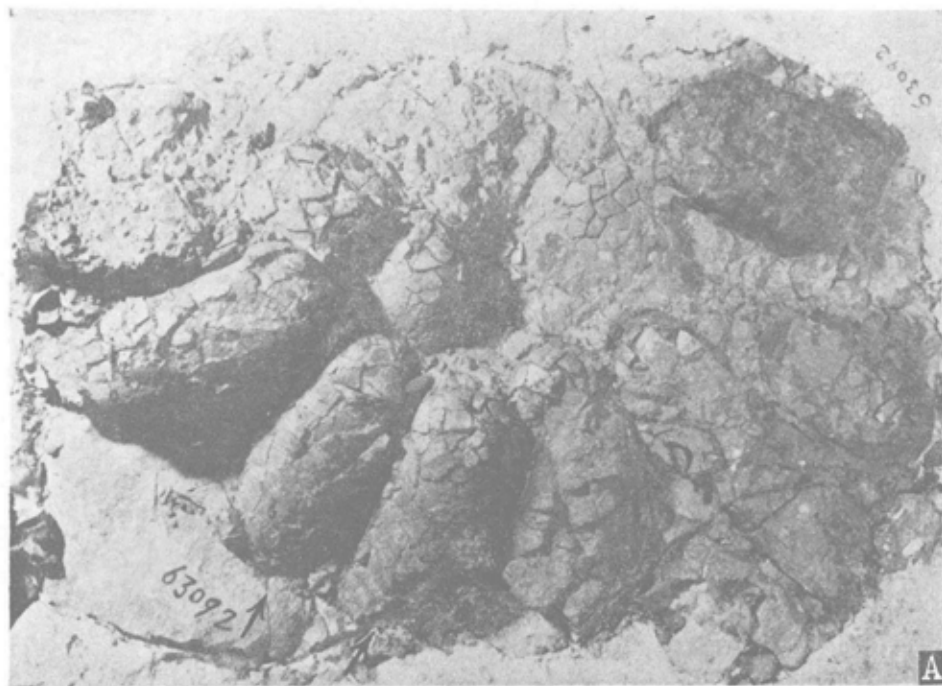


粗皮蛋之另一窩，江西贛州，野外号 Kss，有箭头者见图版 VIII，1/5 原大。
Oolithes rugustus. Another nest of eggs from Kanchou, Kiangsi. (Field
No. Kss) The egg marked with an arrow is shown in plate VIII.

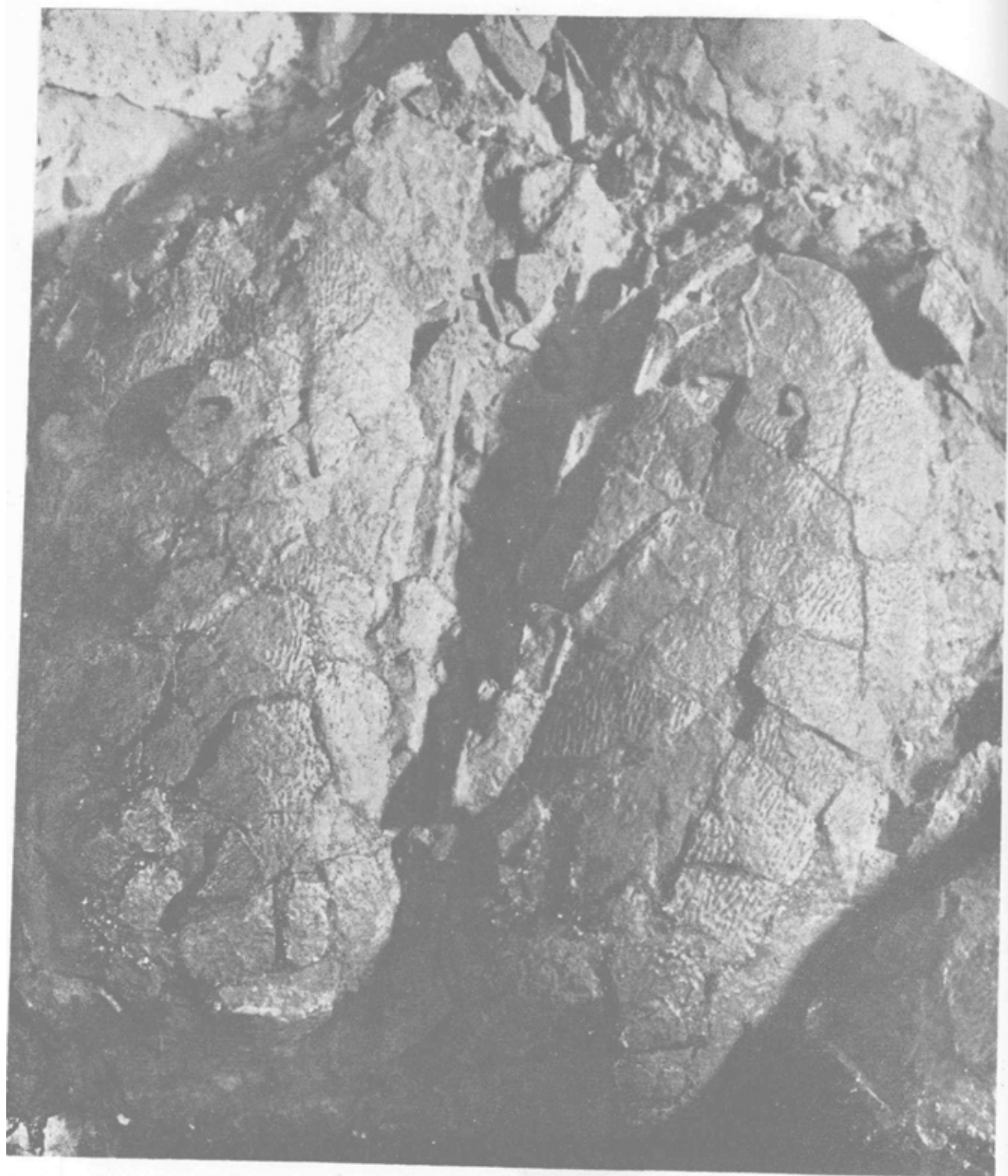


同前图，前图附箭头者，1/1 原大。

The egg marked with an arrow is shown in natural size.



- A. 长形蛋，南雄水口当面岭 (V.2786(63092))，1/5 原大，有箭头者见下一图。
B. 南雄瑶屯 (V.2785(63093))，1/5 原大。
A. *Oolithes* cf. *elongatus*. Tangmienling, Nanhsiung (V.2786(63092)), 1/5 nat. size. The eggs with arrows see next plate.
B. *Oolithes rugustus*. Another nest of eggs from Yaotun, Nanhsiung (V. 2785 (63093)), 1/5 nat. size.



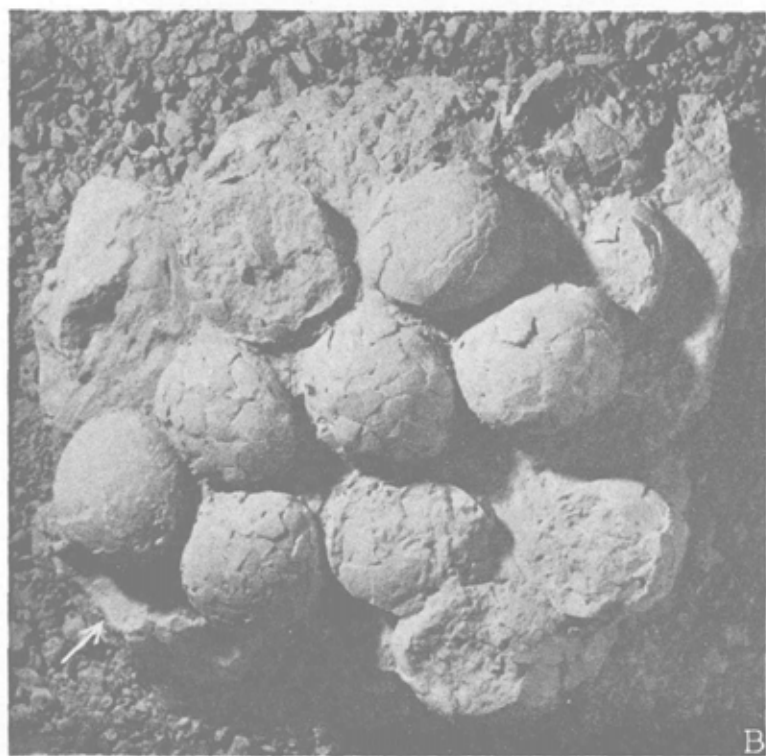
长形蛋前图有箭头者，南雄水口当面岭 (V.2786(63092))，1/1 原大。
Oölithes cf. *elongatus* Tangmienling, Nanhsiung (V.2786(63092)). 1/1 nat.
size. The eggs marked with arrow are shown in natural size.



长形蛋 *Oöolithes* cf. *elongatus*. 南雄城南 (V.2781a (6215)), 两蛋, 1/2 原大。
Oöolithes cf. *elongatus*. South of Nanshiung city. (V.2781a (6215)),
the eggs in 1/2 nat. size.



长形蛋 *Oolithes* cf. *elongatus*. 南雄城南 2 公里 (V.2782), 图版 XIII A
有箭头者之放大, 1/1 原大。
Oolithes cf. *elongatus*. 2km south of Nanshiung city. (V.2782). One egg of a
nest shown by an arrow in Pl. XIII A, in 1/1 nat. size.



- A. 长形蛋，南雄城南 2km (V.2782), 1/5 原大。有箭头者见图版 XII。
B. 圆形蛋，山东莱阳金刚口夏家营 (PMRE. 11), 一窝蛋, 1/5 原大。有箭头之三蛋见图版 XIV。
- A. *Oölithes* cf. *elongatus*. 2km south of Nanshiung city. (V.2782).
1/5 nat. size. The one marked with an arrow see Pl. XII.
B. *Oölithes spheroides*. Hsiachiayin, Chingkankou, Laiyang. (PMRE. 11). A nest of eggs. The three eggs marked with arrows are shown in next plate.

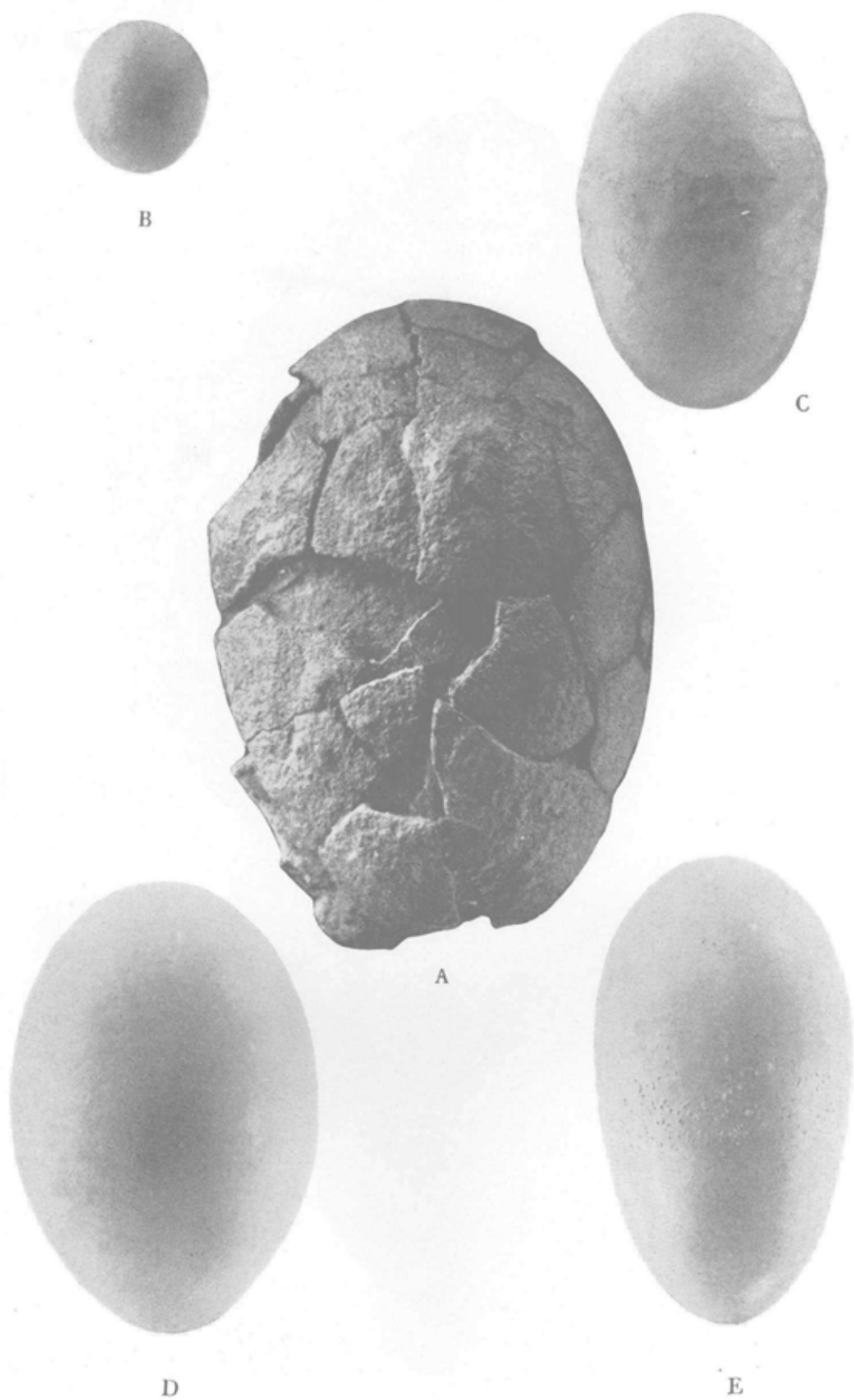


前图有箭头者，1/1 原大。

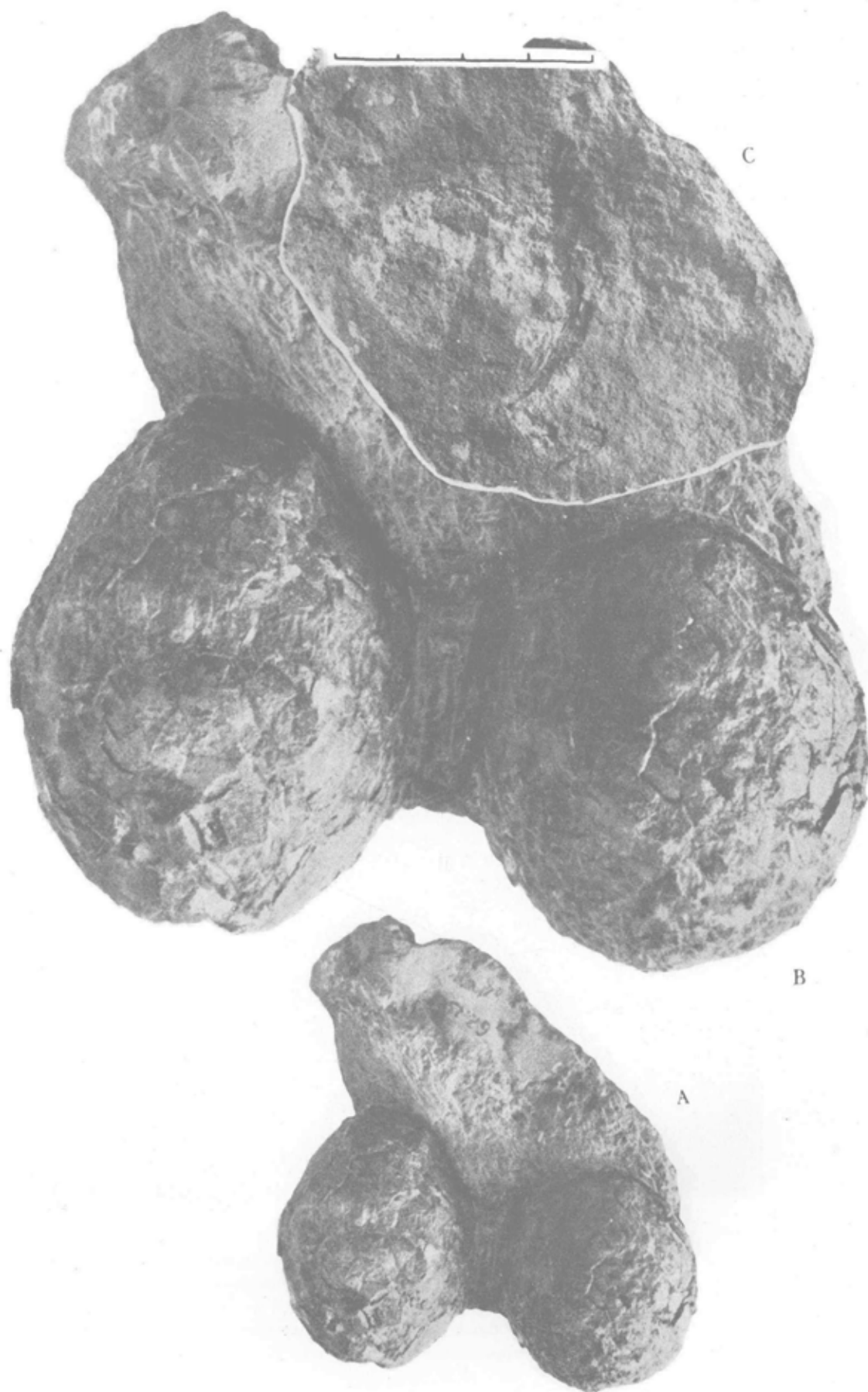
The three eggs marked with arrows are shown in natural size.



圓形蛋，南雄乌径禾尚坑 (V.2787(6222))，一完整蛋及兩破蛋， $2/3$ 原大。
Oolithes spheroides. Hoshangkong, Wuching, Nanhsiung (V.2787 (6222)).
One complete egg and two broken ones in $2/3$ nat. size.



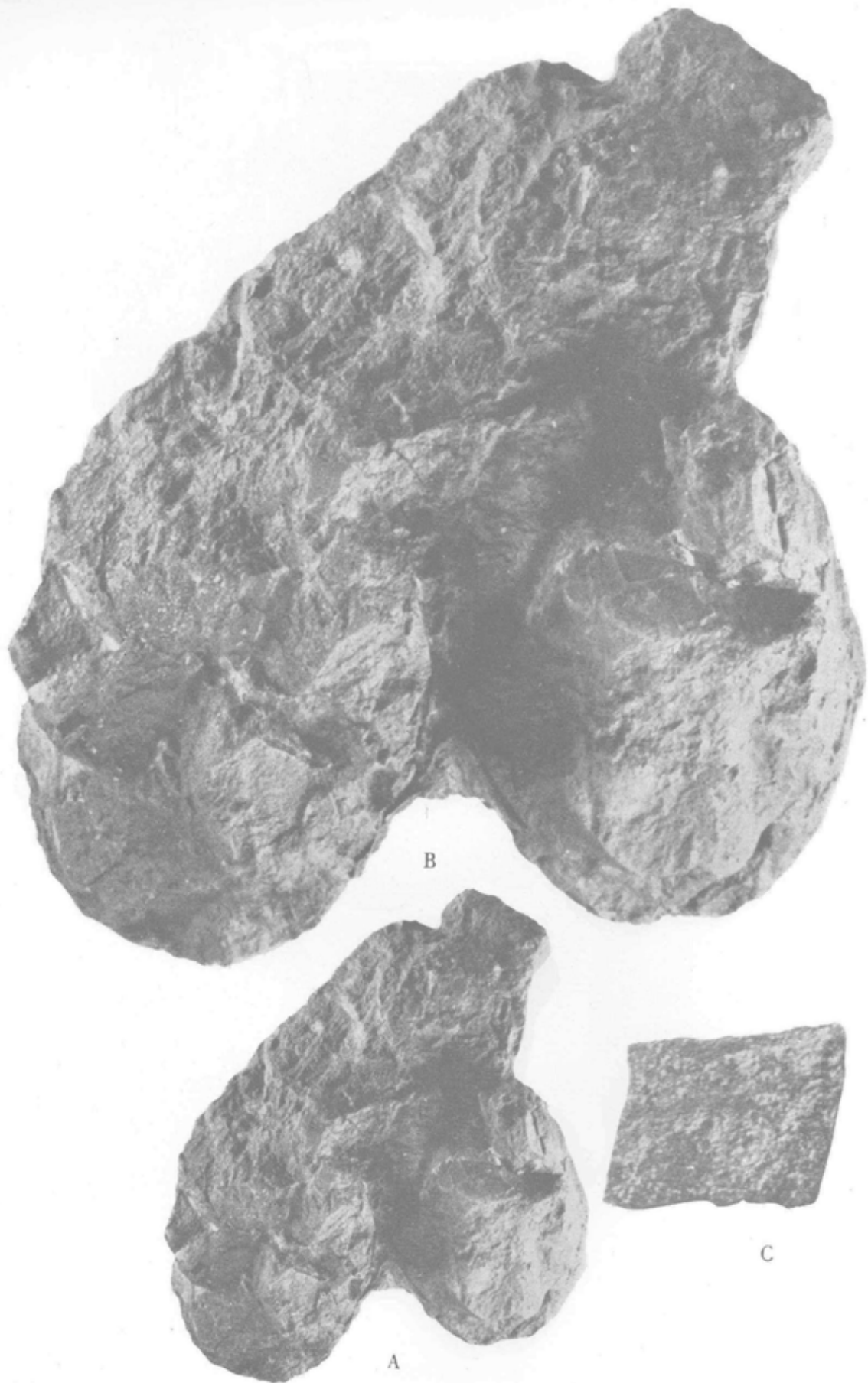
A. 圓形蛋，同前图同一窩的另一完整蛋(地点及号码同上)，1/1 原大。 B. 近代龟蛋，1/1 原大，属种不详。
C. 近代鱷蛋，1/1 原大，可能为中国扬子鱷的蛋。 D. 家鸡蛋，1/1 原大，本所周明镇所饲养并捐赠本所陈列室。
E. 家鸡蛋，1/1 原大，本所刘宪亭所饲养并捐赠本所陈列室。 B. 和 C. 用北京动物园标本照象。
A. *Oolithes spheroides* (V.2787). 1/1. B. An egg of a recent turtle (gen. et sp. not determined). C. An egg possible of *Alligator sinensis*. D. An egg of hen gifted by Dr. M. C. Chow. E. An egg of hen gifted by Mr. H. T. Liu. B. and C. Photographed from the specimens of the Peking Zoological Park.



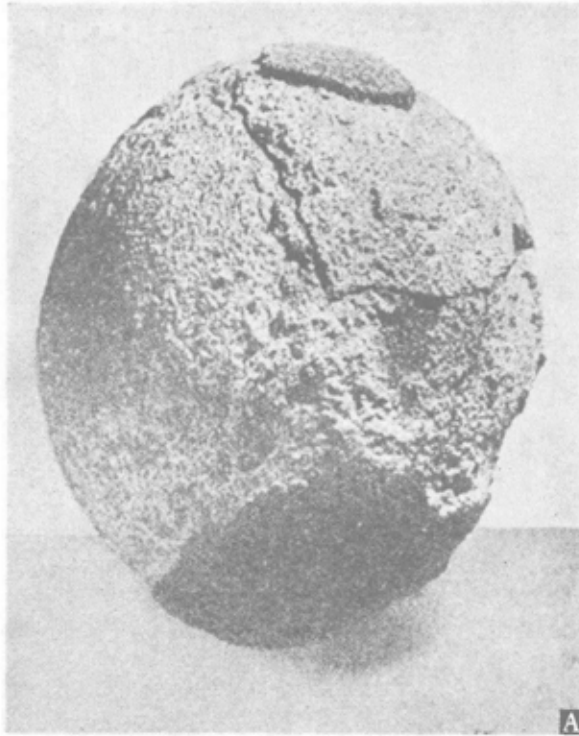
南雄蛋 *Oolithes nanhsiungensis*. A. and B. 南雄乌径腊树园 (V.2789(6225)), A. 1/1原大。

B. 2/1 原大。C. 江西赣州城南五里亭 (K_{sr}) 一破蛋之切面, 1/1 原大。

Oolithes nanhsiungensis. A. and B. Lashuiyuan, Wuching, Nanhsiung (V.2789 (6223)). A. in 1/1 nat. size. B. 2 × nat. size. C. Wuliting south of Kanchou, Kiangsi. A broken egg in cross-section! 1/1 nat. size.



南雄蛋 A. and B. 同前图 A. B. 一标本之反面, A. 1/1 原大。 B. 原大 $\times 2$ 。
C. 同一蛋的一碎片, 原大 $\times 4$ 。
Oolithes nanhsiungensis. Same as the preceding plate A. and B. in opposite views.
A, 1/1 nat. size. B, $2 \times$ nat. size. C. The egg shell of the nest in $4 \times$ nat. size.



A. 蜥脚类之蛋 (*Hypselosaurus priscus*), 3/7 原大(采自 Lapparent 1935, in Piveteau 1955)。
B. Eggs of *Protoceratops andrewsi* 可能是从下看,这一窝蛋,北京自然博物馆有模型,1/5 原大。
A. An egg of a Sauropod (*Hypselosaurus priscus*) (After Lapparent 1935, in Piveteau 1955). 3/7 nat. size.
B. A nest of eggs of *Protoceratops andrewsi*. A cast of it is kept in the Peking Natural History Museum. 1/5 nat. size. The picture shows apparently the under side of the nest.